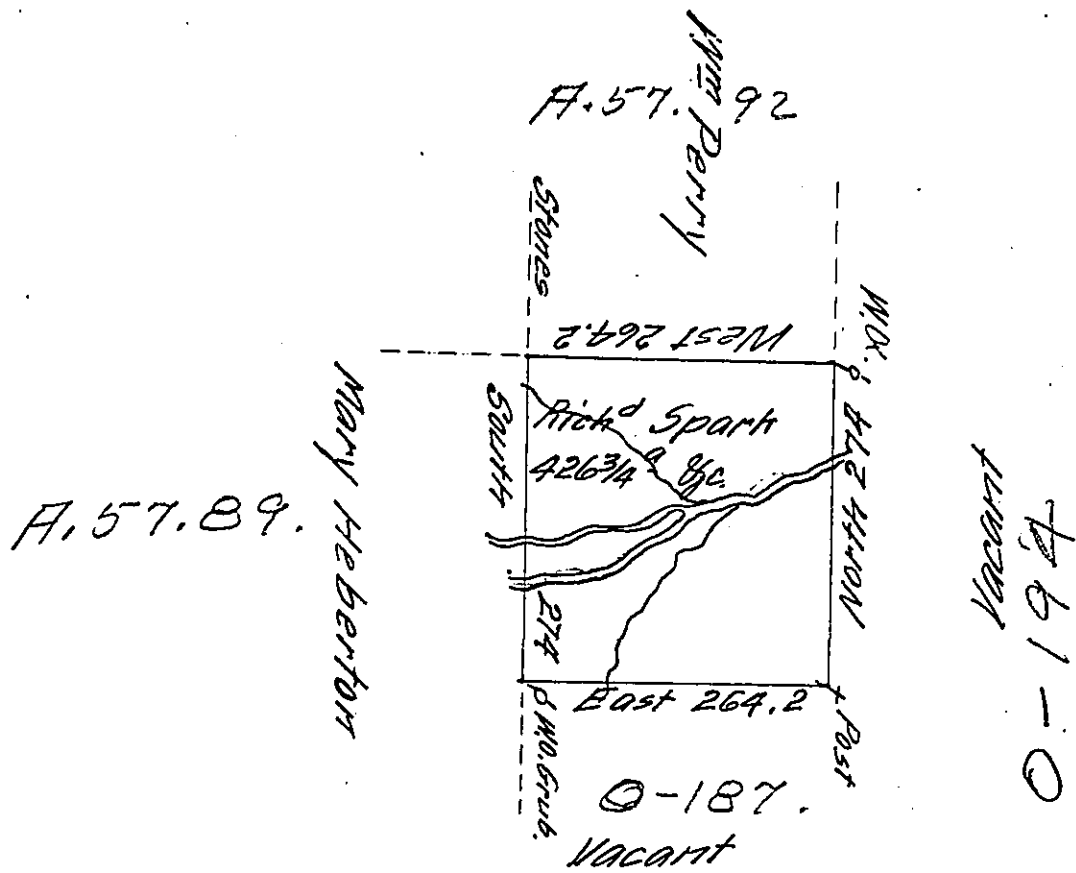


Foster -  
Luzerne



A draft of a tract of land called \_\_\_\_\_ situate on waters of Lehi in the County of Luzerne containing four hundred twenty six acres  $\frac{3}{4}$  of allow<sup>e</sup> Surv<sup>e</sup> for Richd Spark the 15<sup>th</sup> day of June 1793 by virtue of a warrant dated the 24<sup>th</sup> day of Dec<sup>r</sup> 1792

Daniel Bradford Esqr  
OBI

\_\_\_\_\_  
OBI

IN TESTIMONY that the above is a copy of the original remaining on file in the Department of Internal Affairs of Pennsylvania, made conformably to an Act of Assembly approved the 16th day of February, 1833, I have hereunto set my Hand and caused the Seal of said Department to be affixed at Harrisburg, this nineteenth day of December 1911.

Henry Hoover  
Secretary of Internal Affairs.